

May

IN YOUR GARDEN

As the last leaves of autumn fall now is the time to protect your garden from frosts and harvest the ever classic Feijoa for warm winter crumbles.



Autumn is the best time to plant new trees and shrubs as they can get established over the cooler, wetter winter months. Add some Tui Novatec Premium Fertiliser at planting time and tie to a support stake.



Sow seeds of Alyssum, Calendula, Cineraria, Cornflower, Forget-me-not, Lobelia, Lupin, Nemesis, Statice, Stock, Sweetpea and Virginian stock.



Sow seeds of Beetroot, Broccoli, Broad Beans, Cauliflower, Cabbage, Carrots, Onions, Radish, Spinach, Swedes and Turnips directly into your garden bed.



It's your last chance to plant bulbs for a dazzling spring display.



New seasons Daphne, Camellias and Rhododendrons are arriving in store and add welcome colour to the garden in winter and early spring.



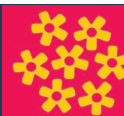
Now is a great time to plant Lilies (Lilium), they are easy to grow and can be planted any time between now and September. Work bulb food into the planting area and cover the bulbs with 10cm of soil.



Garlic and Shallot bulbs are in store now and can be planted until late July.



We've been helping kiwi's grow great gardens since our humble beginnings in 1912. Still proudly New Zealand owned by locals in your community, Palmers is the place to be for all things gardening.



Palmer's

May

IN YOUR GARDEN

As your Leeks grow, pile up the soil around the stems to provide support and keep the stem white.



Maintain

Protect young seedlings from slugs and snails with Qash granules which are rain resistant making them longer lasting for winter use.



Reduce watering of house plants and move them into warmer positions.



Feed citrus trees with Palmers Citrus Fertiliser to maintain foliage colour and good health.



Mulch vegetables and fruit trees with Garden X Compost and Kolush Manuka Mulch.



Bring frost tender patio plants into a sheltered position.

Prepare



A greenhouse in the garden will allow you to continue to grow many salad vegetables like Lettuce, Tomatoes, Cucumbers and Capsicum in spite of cooler temperatures.

Lift Dahlia tubers and Gladioli corms and store in a dry place ready for planting again in spring.

Plan new roses to plant and prepare the soil by adding Garden X Compost. Palmers new seasons roses start arriving in store later this month.



Harvest

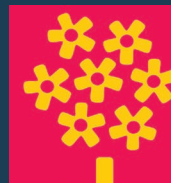


Harvest last Feijoas, Guavas and Tamarillos as they ripen.



All our plants are of the highest quality, but if something fails to grow in your garden, we'll simply replace it for you – that's our Palmers Promise.

For more inspiration and gardening advice head to PALMERS.CO.NZ



Palmer's